



Since 35 Years



## Product Catalogue

ISO 9001:2015 & 14001:2015 Certified Company

कार्पेट किन्दा **YETI** को लोगो हेर्न नमूलनुहोला।





"PROUDLY REACHING EVERY CORNER OF NEPAL."

---



Yeti Carpet

*"Nepal's Pride, in Every Home"*

Locally Made, Nationally Trusted, and Available Across Nepal

कार्पेट किन्दा  को लोगो हेर्न नभुल्नुहोला।

YETI



## An Overview

Yeti Flooring products are made in our two state of the art plants Yeti Carpet Pvt. Ltd. and Yeti Polychem Pvt. Ltd.

Yeti Carpet Pvt. Ltd. is Nepal's first non-woven, tufted, and grass carpet manufacturing company located in the industrial city of Birgunj. The company has the latest machinery from Belgium, China, and India to make its carpet products.

Yeti Polychem Pvt. Ltd. is Nepal's first PVC Flooring, Artificial Leather, Coil Mat, and LVT producer, with its factory located in Hetauda.

## Mission

Our mission is to craft world-class carpets that unite modern innovation with Nepali craftsmanship—delivering stylish, durable, and eco-friendly flooring solutions that meet global standards. By uplifting local industry and championing sustainability, we bring lasting comfort and value to homes and businesses worldwide.

## Vision

To be the first brand of choice for carpets—trusted by customers for unmatched quality, innovation, and style. Yeti aims to lead the Nepali carpet industry with the most diverse portfolio of world-class products that meet the needs of every Nepali household and business, while setting new standards in manufacturing, sustainability, and craftsmanship.

## Core Values

At Yeti Carpet, our values are the foundation of everything we do:

- i. **Quality at the Core:** We put quality at the heart of our products—ensuring every carpet is built to last, combining performance, comfort, and beauty.
- ii. **Customer First:** We are committed to exceeding customer expectations through dependable service, thoughtful design, and long-lasting relationships.
- iii. **Innovation-Driven:** We embrace modern technology and creative thinking to craft carpets that are ahead of the curve in both function and style.
- iv. **Sustainability-Focused:** We minimize our environmental impact by adopting eco-friendly practices across our manufacturing process.
- v. **Integrity Always:** We operate with honesty, transparency, and strong ethical standards in every decision and action.



# Our Range of Products

PVC FLOORING	NON-WOVEN	TUFTED	MAT	REXINE	GRASS	LVT
Galaxy	Lucky Rib	Delta	Coil Mat	Florence	GR35	Wood & Art
Orbit	Griha Laxmi	CH	Scooty Mat	Malta	GR40	Yak
Calio Micro	French Carpet	GYC 103	Door Mat	Margo	Gardenia	
Mini Calio	Shubham	GYC 107	Floor Mat	Sofia		
Calio	Polaris	Boston	S-Mat	Speed		
Calio-Max /Pro		Florida		Venice		
Calio-Uno		Miami				
Jupiter & Mars		Elpaso				
Chipps		Serene				
Stud		Maze				
		Diwan				
		Highway				
		Crossway				
		Hana				
		Caressa				





# PVC FLOORING

We create high-quality PVC flooring that transforms any space - whether it's your home, office, or institution. Using advanced calendaring technology from Japan and Taiwan, our floors offer exceptional durability, precision, and finish.

Our curated designs—updated every year—combine timeless elegance with the latest trends, so your floors always reflect your personal style.

From cozy living rooms to high-traffic commercial spaces, Yeti PVC flooring is built to last—bringing beauty, strength, and comfort under every step.



# Galaxy Series

Enhance your space with bold wooden, floral, stone, and geometric patterns-sealed with a protective wear layer for lasting beauty and performance in homes, shops, offices, and showrooms.

## PERFORMANCE

<b>Abrasion Resistance</b> (Additional wear layer added to increase abrasion resistance)	IS: 3464
<b>Fire Resistance</b> (Conforms to IS: 3464-1986 standards)	IS: 3464
<b>Colour Fastness</b> (Conform to wool standard < 4)	IS: 9766
<b>Dimensional Stability</b> (Change in any linear dimension will not exceed 1.75%)	IS: 3464:1986
<b>Curling</b> (Conforms to IS: 3464-1986)	IS: 3464:1986
<b>Ply Adhesion</b> (0.50 kN/m)	IS: 3464:1986
<b>Water Absorption</b> (Less than 0.4%)	IS: 3464:1986
<b>Heat Ageing &amp; Exudation</b> (No visible effect or exudation)	IS: 3462/1986
<b>Oil Absorption</b> (Less than 0.05%)	IS: 3464:1986
<b>Flexibility</b> (Does not crack or show any sign of failure till 0°C)	IS: 3462/1986

- **Installation**

Ensure subfloor is smooth, clean, dry and structurally sound.

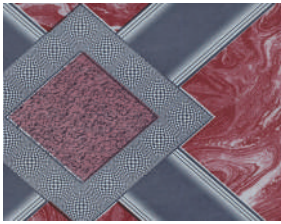
- **Maintenance**

The floor should be cleaned with a mop using a neutral PH cleaning solution.

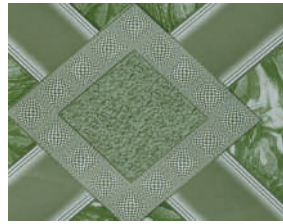
- **Chemical Resistance**

Yeti products are normally resistant to mild diluted acids and alkalis. The surface must be cleaned immediately if concentrated acids or alkalis spills.

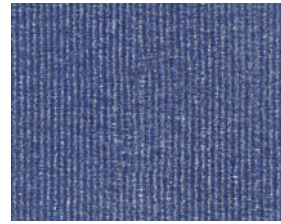




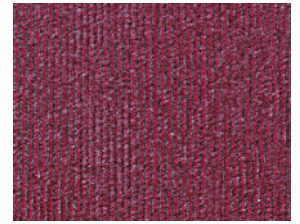
206-008



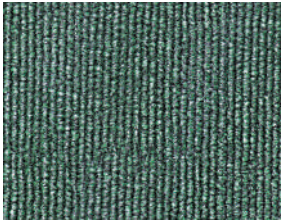
206-045



209-002



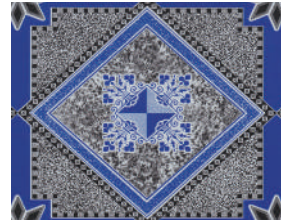
209-008



209-045



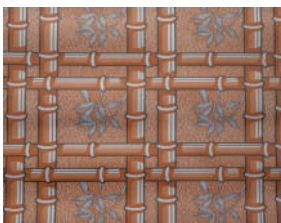
210-001



210-002



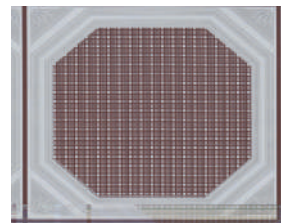
210-045



211-061



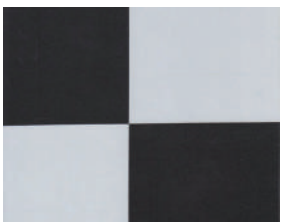
212-001



212-061



212-082



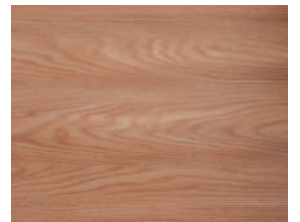
213-005



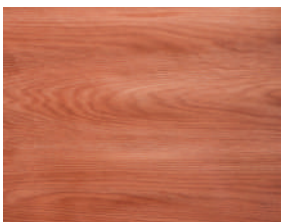
301-002



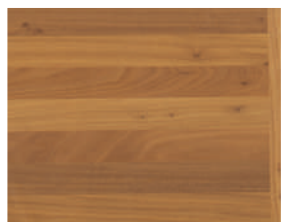
301-074



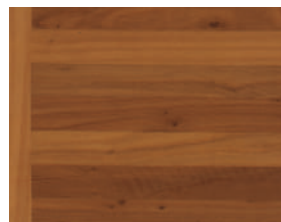
305-019



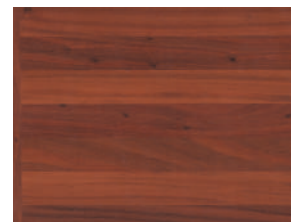
305-076



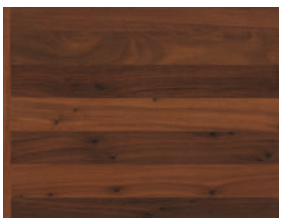
306-061



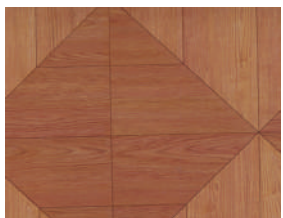
306-062



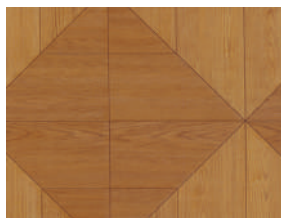
306-082



306-083



309-009



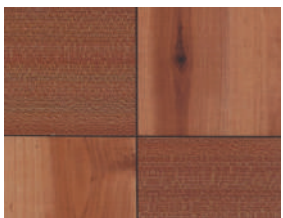
309-061



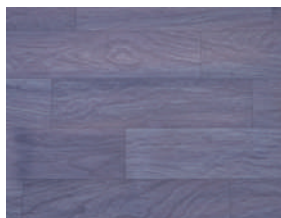
312-067



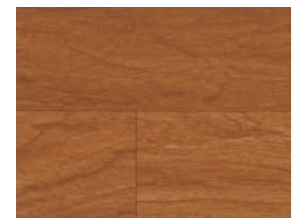
314-019



314-060

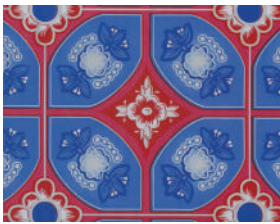


321-005



321-061

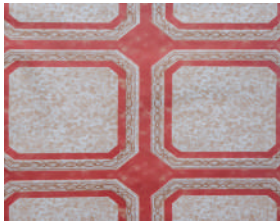




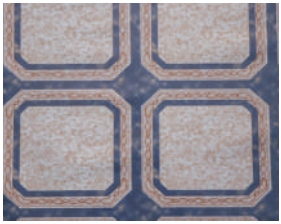
323-002



323-019



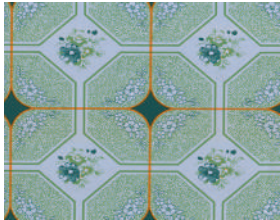
324-001



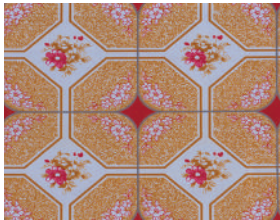
324-002



331-003



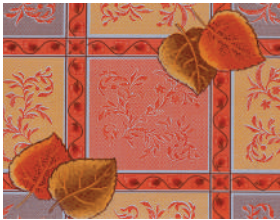
332-011



332-019



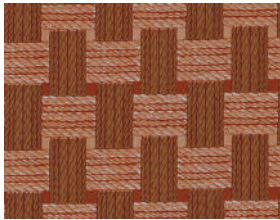
333-002



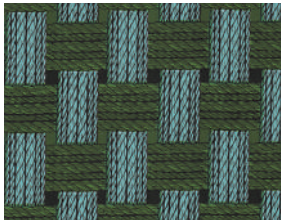
333-003



333-045



336-003



336-045



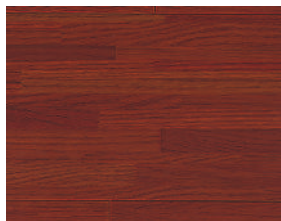
337-001



338-061



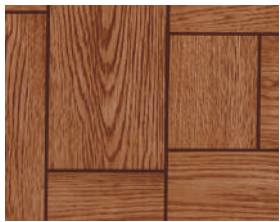
339-009



340-003



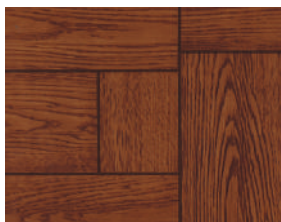
340-061



341-003



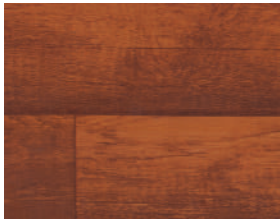
341-022



341-061



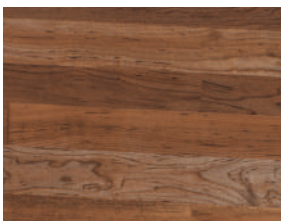
343-022



343-082



348-062



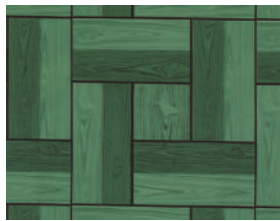
348-081



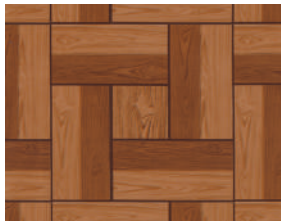
350-001



350-005

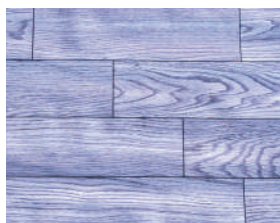


350-045



350-061

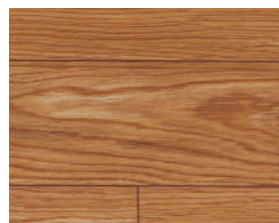




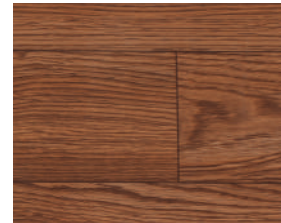
360-005



360-062



360-067



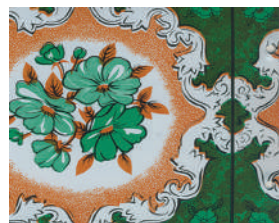
360-082



404-002



404-003



404-011



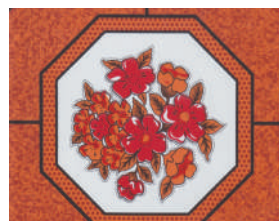
405-005



405-066



406-002



406-003



406-045



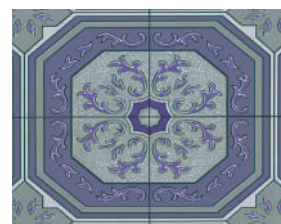
406-082



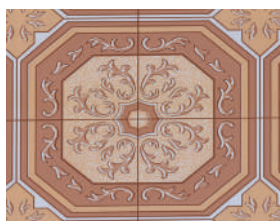
408-001



410-007



410-011



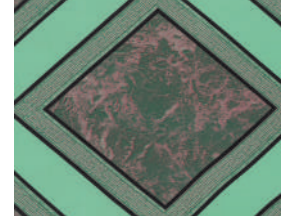
410-061



412-002



412-003



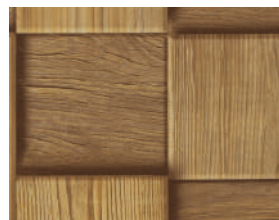
412-045



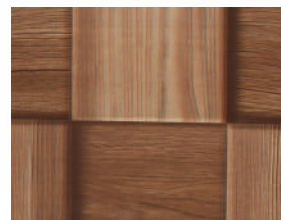
412-062



432-005

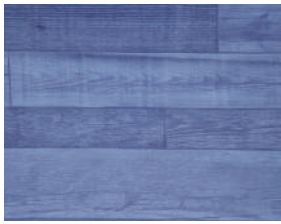


432-061



432-067





431-005



431-061



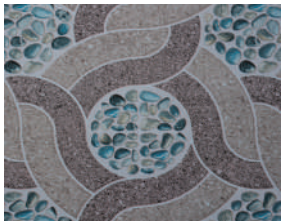
431-082



431-083



434-002



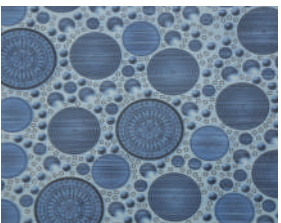
434-003



434-061



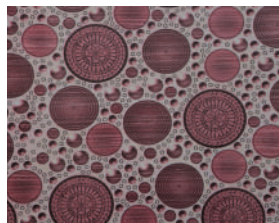
434-083



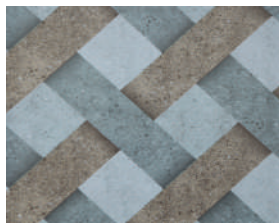
380-002



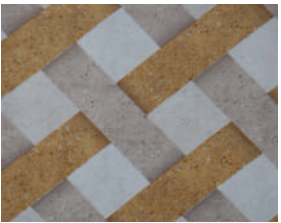
380-061



380-067



381-002



381-061



381-062



381-082





# Calio Series

Bring nature indoors with the Calio Series-carefully selected wooden designs inspired by real bark textures, finished with a protective clear layer for lasting elegance in both homes and offices.

## PERFORMANCE

<b>Abrasion Resistance</b> (Additional wear layer added to increase abrasion resistance)	IS: 3464
<b>Fire Resistance</b> (Conforms to IS: 3464-1986 standards)	IS: 3464
<b>Colour Fastness</b> (Conform to wool standard < 5)	IS: 9766
<b>Dimensional Stability</b> (Change in any linear dimension will not exceed 0.6%)	IS: 3464:1986
<b>Curling</b> (Conforms to IS: 3464-1986)	IS: 3464:1986
<b>Ply Adhesion</b> (0.80 kN/m)	IS: 3464:1986
<b>Water Absorption</b> (Less than 0.4%)	IS: 3464:1986
<b>Heat Ageing &amp; Exudation</b> (No visible effect or exudation)	IS: 3462/1986
<b>Oil Absorption</b> (Less than 0.05%)	IS: 3464:1986
<b>Flexibility</b> (Does not crack or show any sign of failure till 0°C)	IS: 3462/1986

- **Adhesive**

We recommend Fevicol SR 505/SR 707/SR 998 or any equivalent rubber based adhesive for laying

- **Installation**

Ensure subfloor is smooth, clean, dry and structurally sound.

- **Maintenance**

Clean Calio flooring using a pole mounted deck brush or a brush attachment on a low speed scrubbing machine with a neutral PH cleaning solution.

- **Chemical Resistance**

Yeti products are normally resistant to mild diluted acids and alkalis. The surface must be cleaned immediately if concentrated acids or alkalis spills.

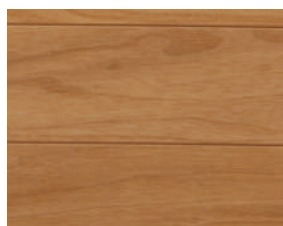




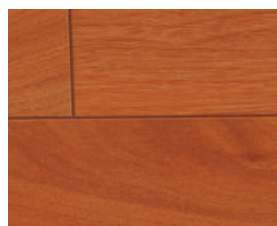




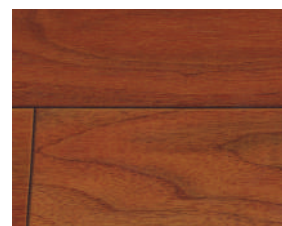
363-005



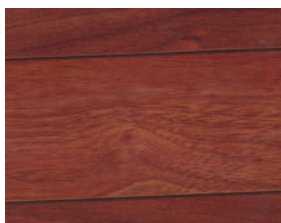
363-022



363-061



363-067



363-082



365-003



365-005



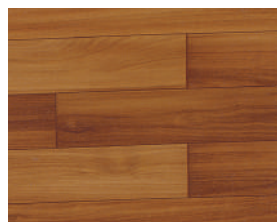
365-067



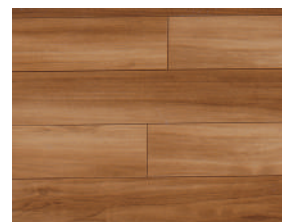
366-005



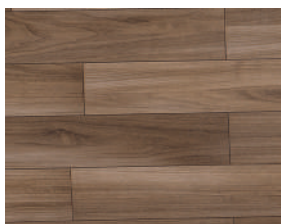
366-061



366-062



366-067



366-083



436-002



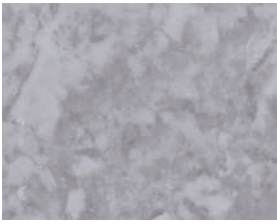
436-003



436-005







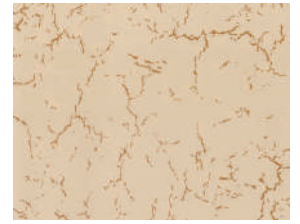
102-004



103-005



103-045



103-062



205-061



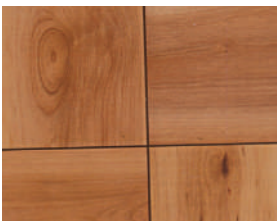
205-062



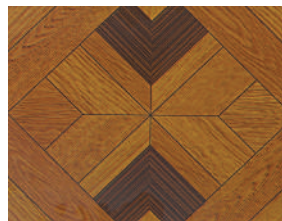
205-067



313-061



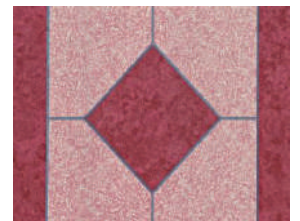
313-073



320-009



320-061



322-074



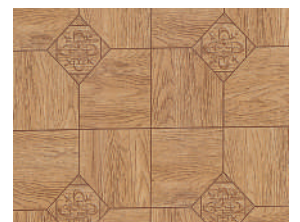
325-061



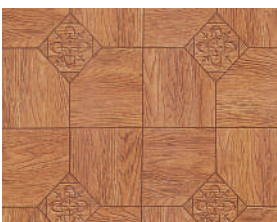
325-067



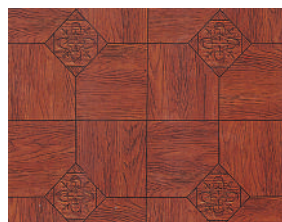
325-082



329-061



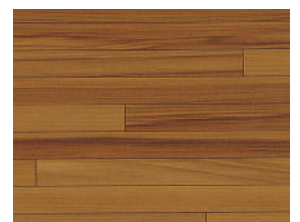
329-067



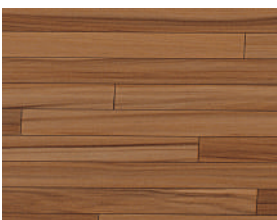
329-082



334-022



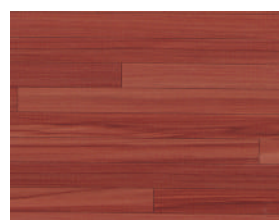
334-061



334-062



334-067



334-082



335-003



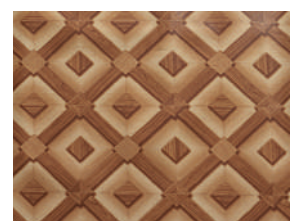
335-009



335-061



355-008



355-061





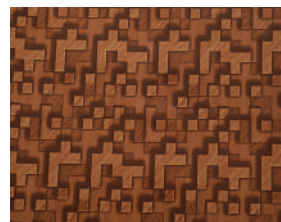
355-062



355-067



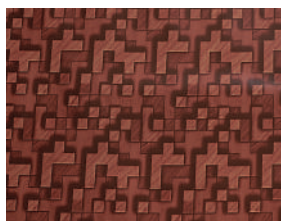
361-022



361-061



361-062



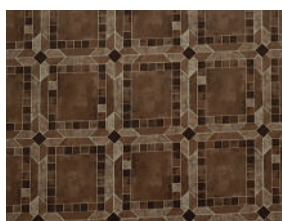
361-082



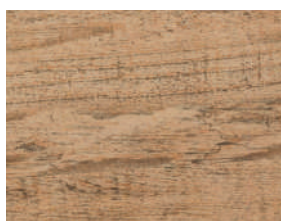
362-003



362-022



362-067



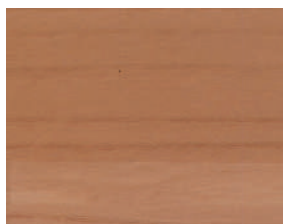
407-004



407-007



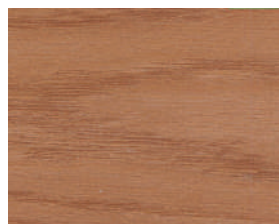




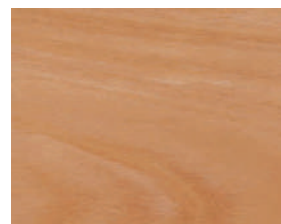
304-076



305-022



305-061



307-075



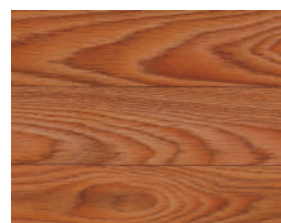
344-061



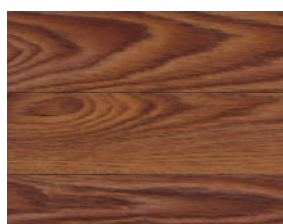
344-062



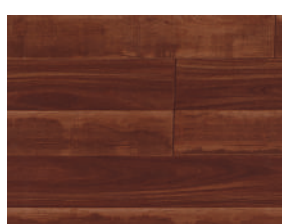
344-082



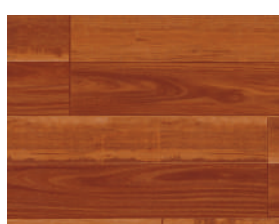
345-061



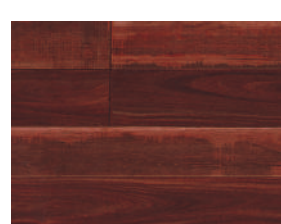
345-082



346-061



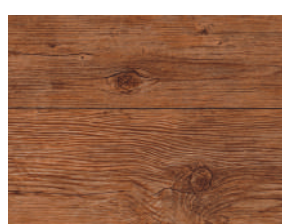
346-067



346-082



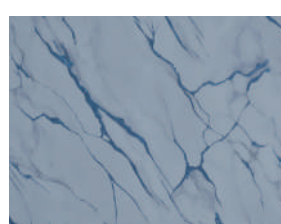
347-005



347-061



347-067



430-002



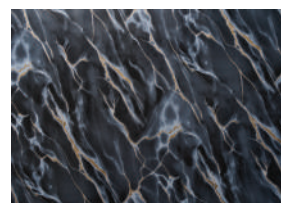
430-003



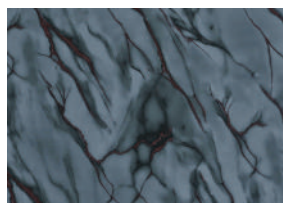
430-004



430-005



430-006



430-011



430-061



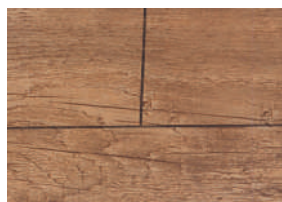
430-062



430-067

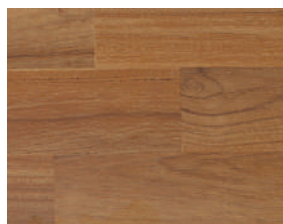


501-004

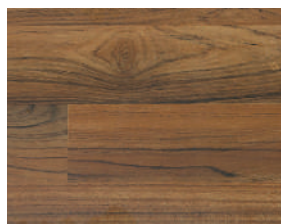


501-007





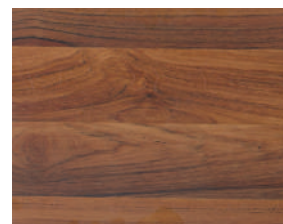
319-003



319-009



319-022



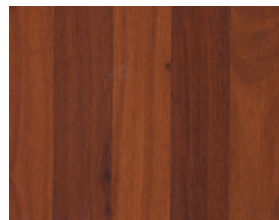
319-067



321-022



304-067



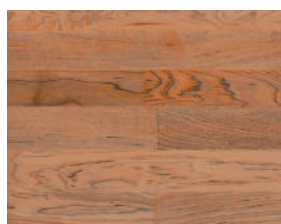
306-067



307-022



348-005



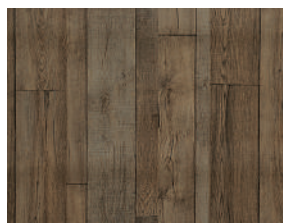
348-061



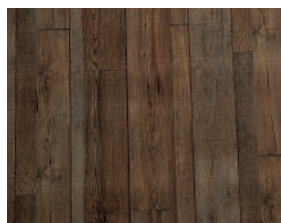
348-067



348-082



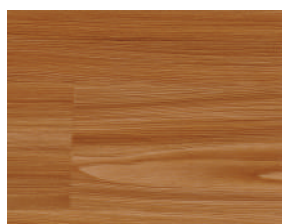
413-061



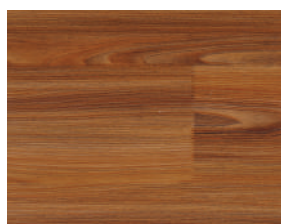
413-067



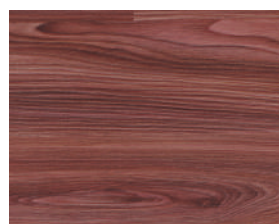




342-022



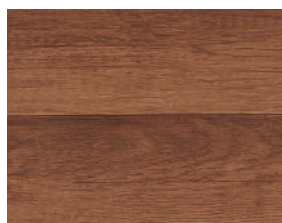
342-067



342-082



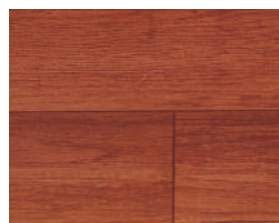
343-061



343-062



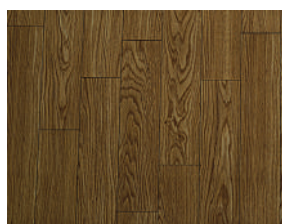
343-067



343-082



360-022



360-061





# Chipps, Stud, Jupiter & Mars

Elevate your space with the Project Range—luxurious marble finish, crafted for timeless sophistication and stellar style.

## PERFORMANCE

<b>Abrasion Resistance</b> (Has High Resistance to wear)	IS: 3464
<b>Fire Resistance</b> (Does not support to combustion or self extinguishing)	IS: 3464
<b>Colour Fastness</b> (Conform to wool standard < 6)	IS: 9766
<b>Dimensional Stability</b> (Change in any linear dimension will not exceed 0.4%)	IS: 3464:1986
<b>Curling</b> (Conforms to IS: 3464-1986)	IS: 3464:1986
<b>Ply Adhesion</b> (1.05 kN/m)	IS: 3464:1986
<b>Water Absorption</b> (Less than 0.4%)	IS: 3464:1986
<b>Heat Ageing &amp; Exudation</b> (No visible effect or exudation)	IS: 3462/1986
<b>Oil Absorption</b> (Less than 0.05%)	IS: 3464:1986
<b>Flexibility</b> (Does not crack or show any sign of failure till 0°C)	IS: 3462/1986

- **Adhesive**

We recommend Fevicol SR 505/SR 707/SR 998 or any equivalent rubber based adhesive for laying

- **Installation**

Ensure subfloor is smooth, clean, dry and structurally sound.

- **Maintenance**

Clean flooring using a pole mounted deck brush or a brush attachment on a low speed scrubbing machine with a neutral PH cleaning solution.

- **Chemical Resistance**

Yeti products are normally resistant to mild diluted acids and alkalis. The surface must be cleaned immediately if concentrated acids or alkalis spills.

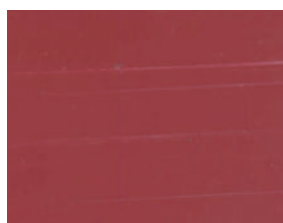






## PVC FLOORING

# Jupiter & Mars<sup>®</sup>



Red



Blue



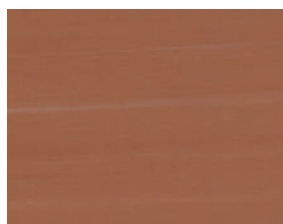
Belge



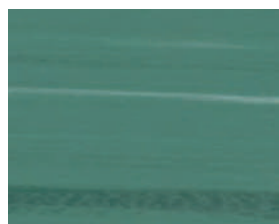
Light Grey



ASH Grey



Teracotta



Green



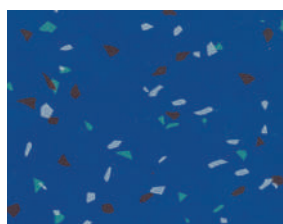
White

## PVC FLOORING

# Chipps<sup>®</sup>



Green



Blue



Red



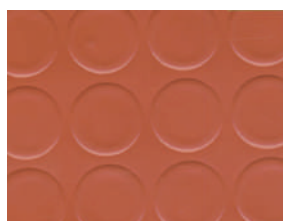
Teracotta

## PVC FLOORING

# Stud<sup>®</sup>



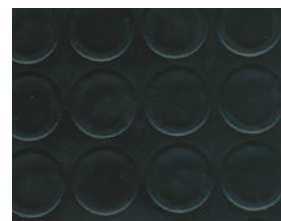
B.Button Grey



B.Button Teracotta



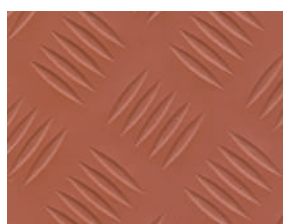
B.Button Blue



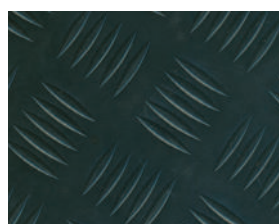
B.Button Black



Checked Grey



Checked Teracotta



Checked Black



Checked Blue

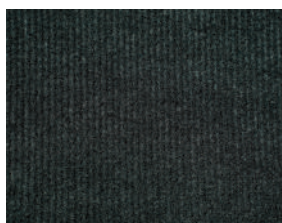


# NON WOVEN CARPET

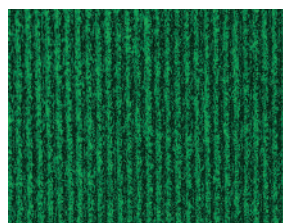
Yeti Carpet is Nepal's pioneer in non-woven carpets, bringing comfort and style to homes across the country since the very beginning. As the market leader, we use top-quality polypropylene and polyester fibers, crafted with advanced non-woven technology.

From detailed jacquard patterns to soft velour finishes, every Yeti carpet is thoughtfully made to add warmth, beauty, and a touch of elegance to any space.

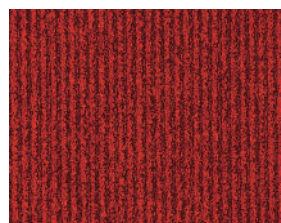




Grey



Green



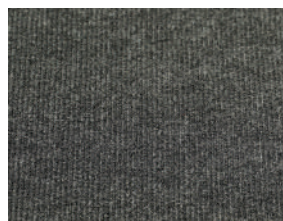
Red



Brown



M-Green



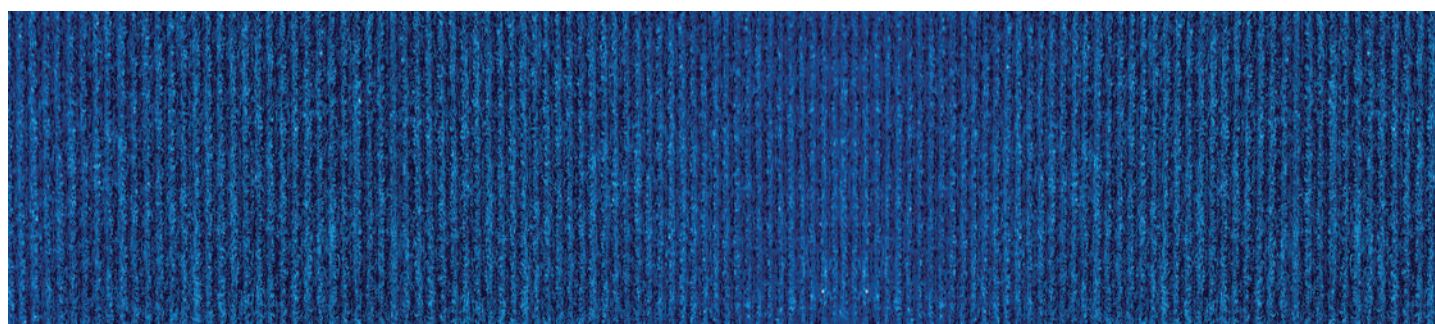
L-Grey



Beige



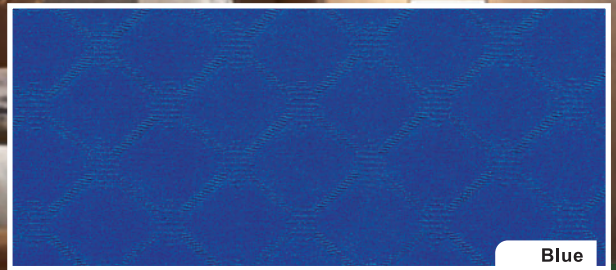
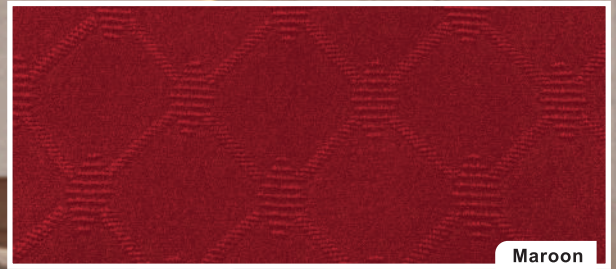
Maroon



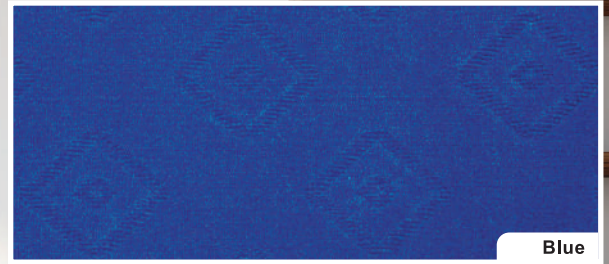
Blue







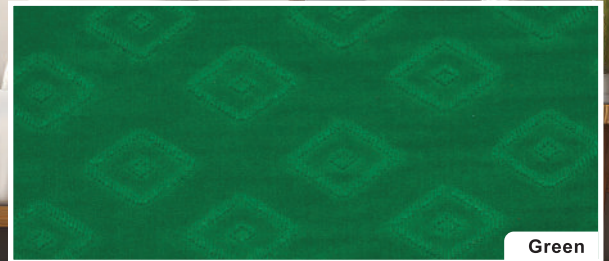




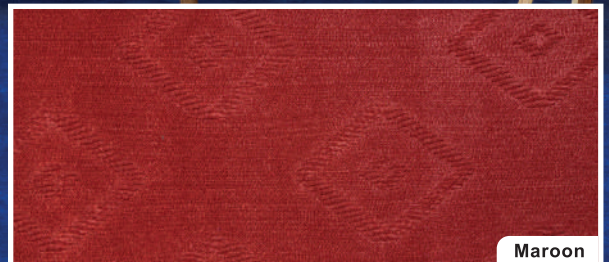
Blue



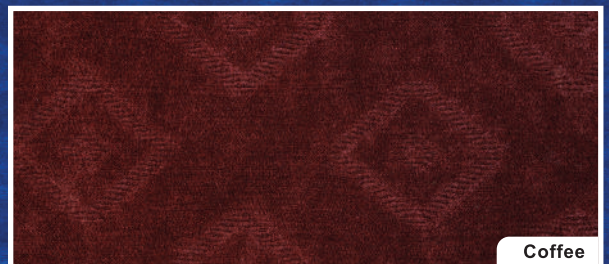
Grey



Green

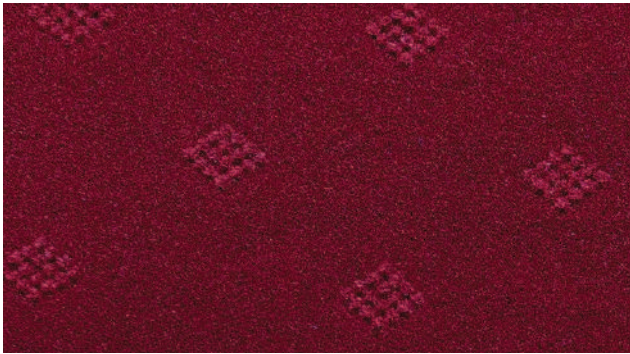


Maroon

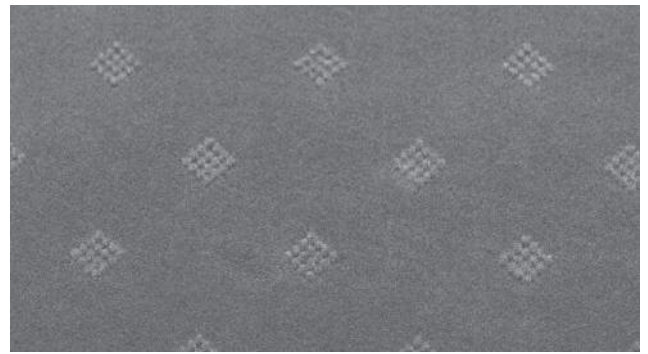


Coffee

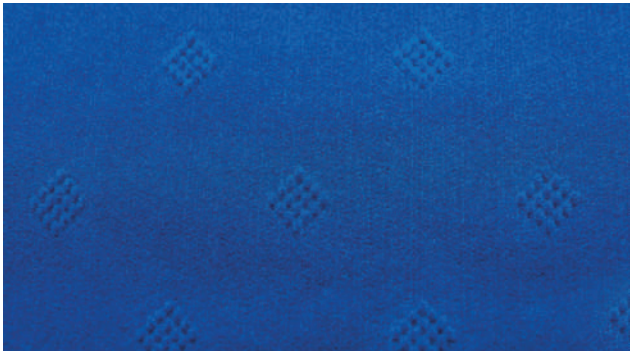




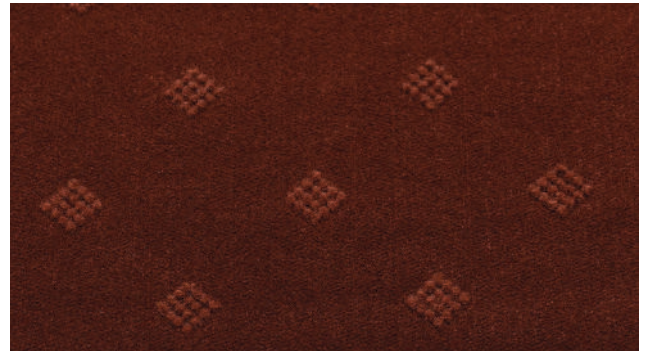
Maroon



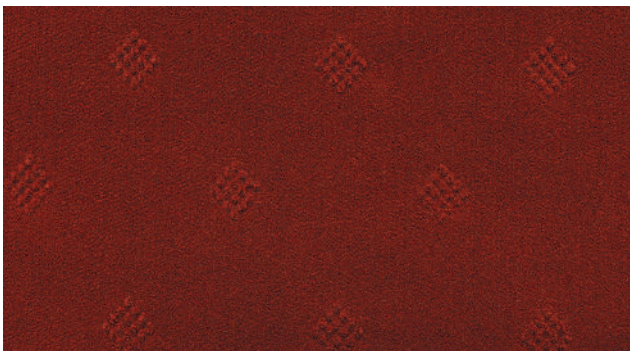
Grey



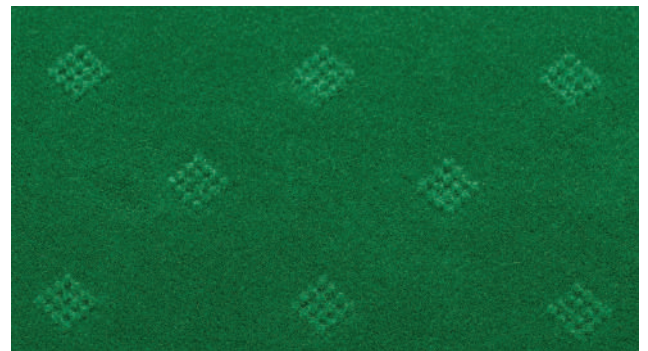
Blue



Coffee



R Brown



Green





# TUFTED CARPET

We pioneered tufted carpets in Nepal, offering graphic, hi-low, and cut pile designs. Made on advanced Vandewiele machines, our carpets combine texture, detail, and durability-setting the standard for style and quality.



## TUFTED

**Delta**



Belge



Blue



Brown

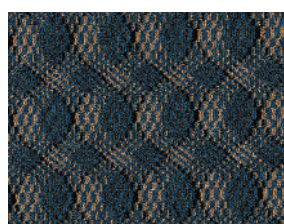


Grey



Red

**Standard<sup>®</sup>**



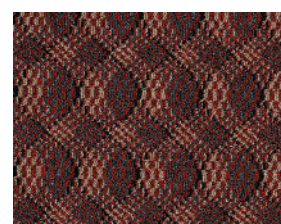
CH Blue



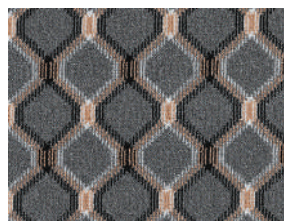
CH Brown



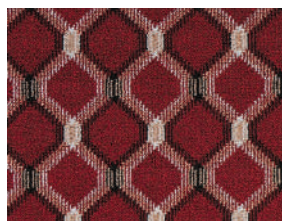
CH Green



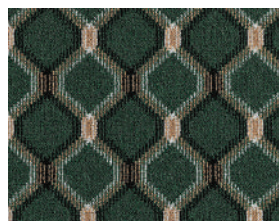
CH Red



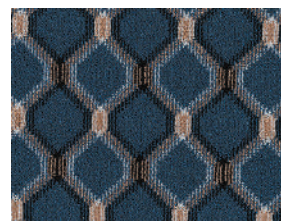
GYC 103-3001 Grey



GYC 103-3002 Red



GYC 103-3004 Green



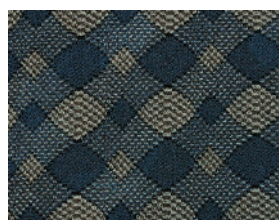
GYC 103-3005 Blue



GYC 107-Grey



GYC 107-Red



GYC 107-Blue



GYC 107-Brown



**Standard<sup>®</sup>**





Miami Grey



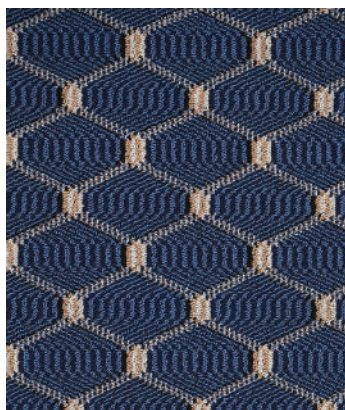
Blue



Green



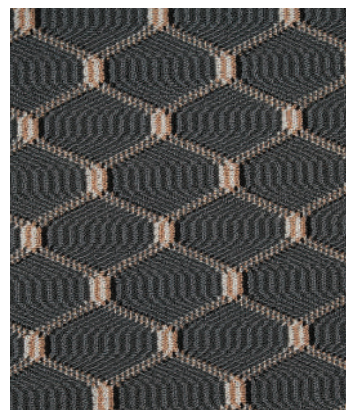
Red



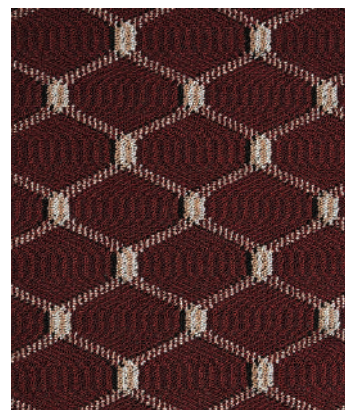
Blue



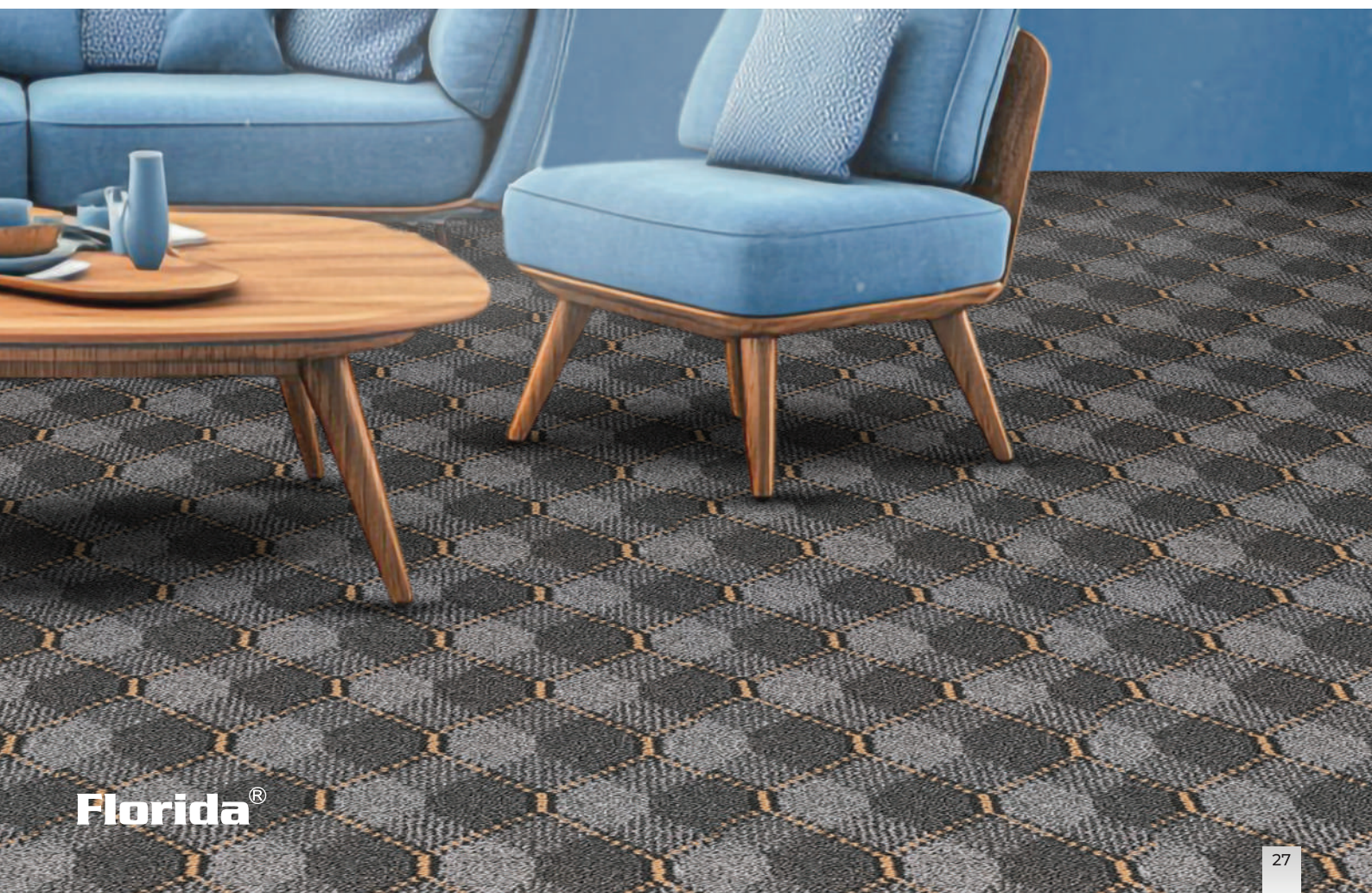
Brown



Grey



Maroon





TUFTED

Elpaso



Blue



Brown



Grey



Green



Red

Florida®



Blue



Brown



Grey



Maroon



Red

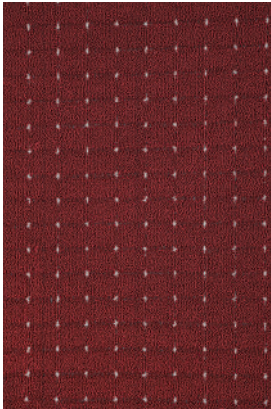
Serene



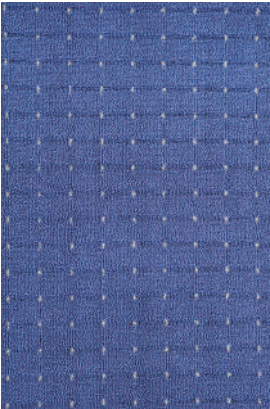
D.Blue



Grey



Maroon



S.Blue



P.Green

Maze



Brown



Grey

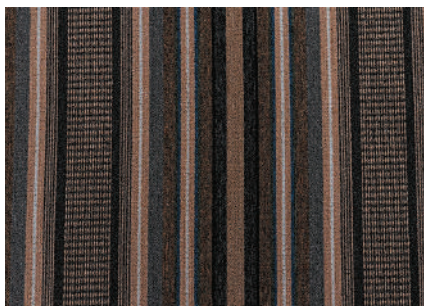


Red



Rust





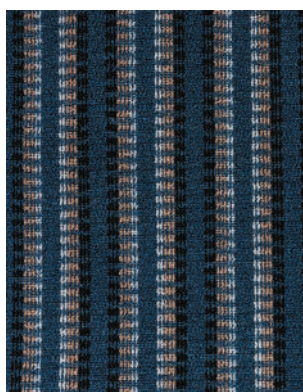
Grey



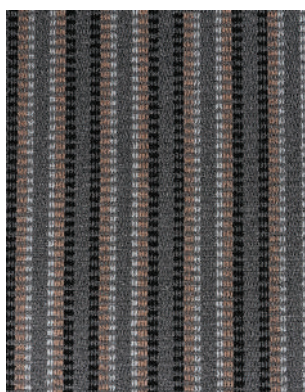
Red



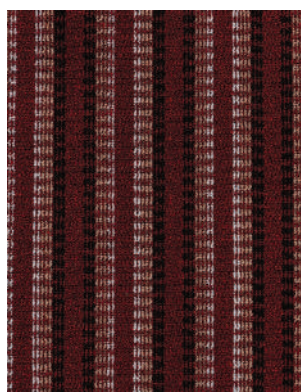
Brown



Blue



Grey



Red



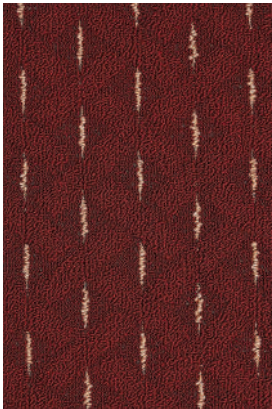
Brown







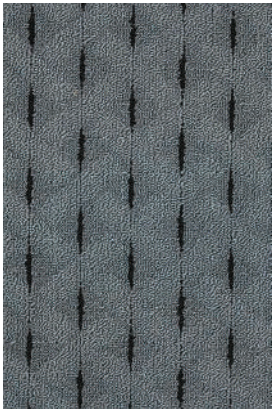
N.Blue



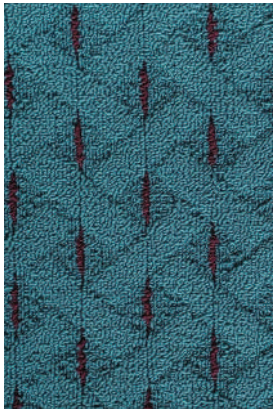
Zen Red



Dark Beige

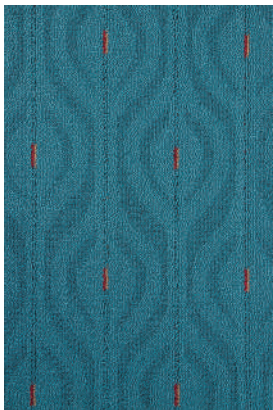


M.Grey



B.Green

Hana®



B. Green



D. Beige



Beige



M.Grey

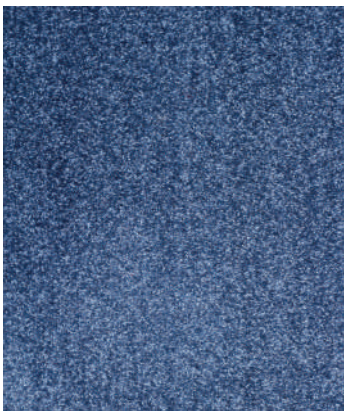


Zen Red

Caressa



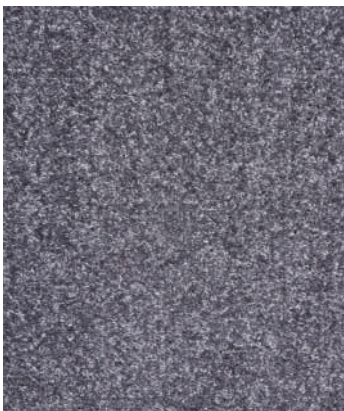
Belge



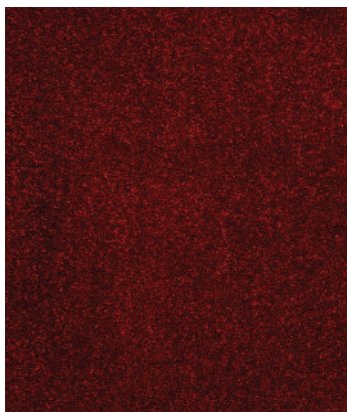
Blue



Brown



Grey



Red

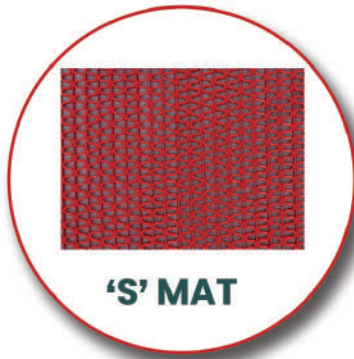


Rust



# PVC MATS

Yeti is a trusted name in PVC mats, known for durability and performance. Our range includes PVC Door Mats, Welcome Mats, S Mats, and Scooter Mats—each designed to withstand daily wear and tear. Made from high-quality PVC, these mats offer excellent grip, are easy to clean, and provide reliable anti-slip protection, making them ideal for homes, shops, and vehicles alike.





### Door Mat



Red



Blue



Green



Grey

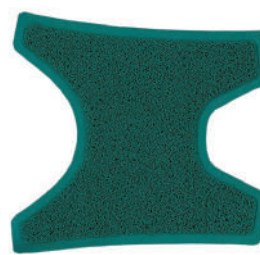
### Scooty Mat



Red



Blue



Green



Grey

### Floor Mat (Rolls)



Red



Blue



Green

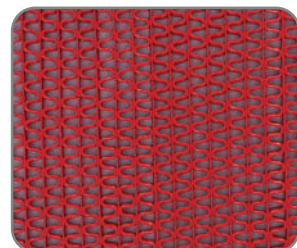


Grey



Black

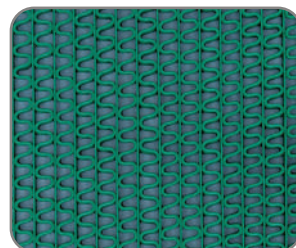
### 'S' Mat



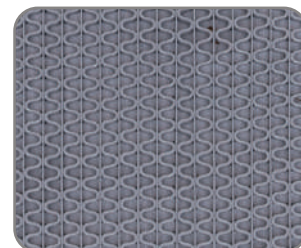
Red



Blue



Green



Grey





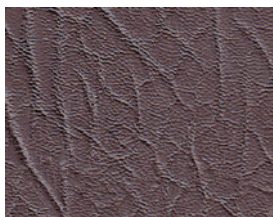
# REXIN

Yeti is a leading name in artificial leather, known as "Rexin." Yeti's Rexin is used by top manufacturers across footwear, furniture, and apparel, in Nepal. Furthermore, our Rexin is crafted for durability, flexibility, and finish. We offer custom formulations for institutional clients, while our retail brands-Speed, Florence, and Malta among others-deliver reliable, long-lasting solutions for individual needs.

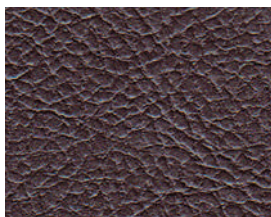




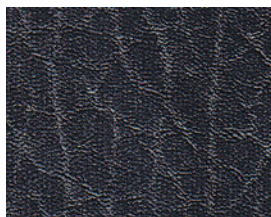
## Sofia



Brown



DK Brown



Black



Maroon Black

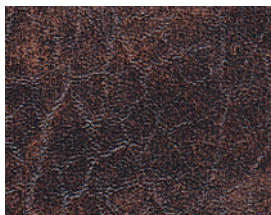


Tan Brown

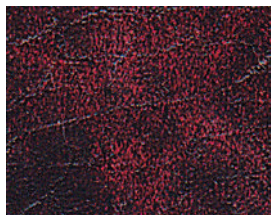
## Margo



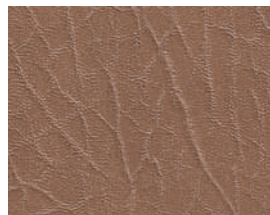
Black



Brown Black



Maroon Black



DK Beige

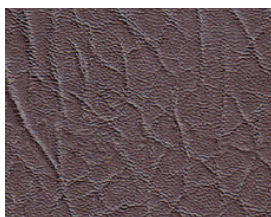


Tan Brown

## Florence



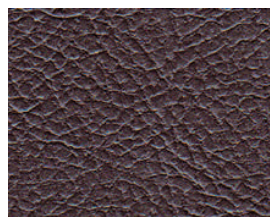
Black



Brown



Cream

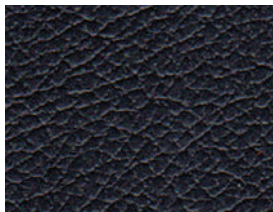


DK Brown

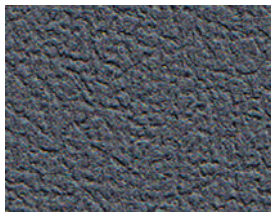


Tan

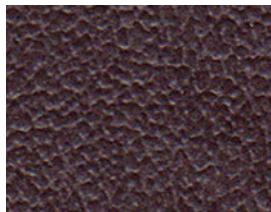
## Venice



Black



Dark Grey



Dark Brown

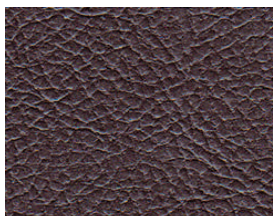


Red



Tan

## Speed



DK Brown



R Blue



Orange



Beige 07

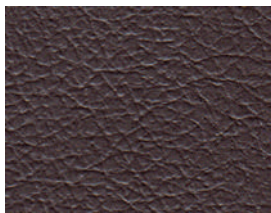


Tan 05

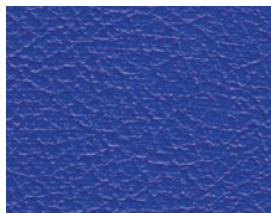
## Malta



Light Grey



Brown



R Blue



Beige



Tan





# ARTIFICIAL GRASS

Yeti's artificial grass offers a perfect blend of natural look and long-lasting performance. Designed for both indoor and outdoor use, it adds a touch of greenery to gardens, balconies, terraces, playgrounds, and even indoor corners. With soft, realistic texture and minimal maintenance, Yeti grass stays fresh and vibrant all year round—no watering, no mowing, just lasting beauty

**Perfect Mowing Look**

Green Straight Yarn + Yellow Curve Yarn

**Real Grass Look**





Yeti is Nepal's first and only Luxury Vinyl Tile (LVT) factory. LVT combines durability, ease of maintenance, and striking aesthetics, making it a top choice for modern interiors. Yeti's products are crafted with precision and excellence, offering a wide range of designs that replicate natural textures while providing resilience against wear and tear. Ideal for both residential and commercial spaces, Yeti's LVT delivers luxury, style, and unmatched durability to elevate any environment

## Specification

S.No.	Properties	Reference Test Method	Specified Value
1	Type of Flooring	IS:5318-1969	Resilient Flooring
2	Total Thickness(mm)	IS:3464-1986	3.00
3	Dimension(Size) in mm	IS:3464-1986	940*186*3
4	Squareness in mm, max.	IS:3464-1986	≤0.15
5	Wear Layer Thickness(micron)	IS:3464-1986	300
6	Ply Adhesion(KN/m) min.	IS:3464-1986	1.05
7	Residual Indentation(mm)	IS:3464-1986	≤0.10
8	Flexibility	IS:3462-1986 Appendix-A	Shall not break,crack or show any other sign of failure
9	Abrasion Resistance in CC (Max)	ISO-9352	0.35
10	Moisture Movement(%)	IS:3464-1986	≤0.01
11	Color Fastness to Daylight	IS:9766-1981	To Pass Grade 6
12	Heat ageing and Exudation	IS:3462-1986 Appendix-C	No Exudation or Shall Show No crack
13	Fire Resistance	IS:3464-1986	Does not support combustion or self extinguising
14	Chemical Resistance a) Mustard oil b) Synthetic Detergents c) Hydrogen Peroxide d) Oxalic Acid e) Glycerine f) Sodium Chloride	BS EN 423/ISO: 26987:2012	No Effect No Effect No Effect No Effect No Effect No Effect
15	Surface Protection	PUR	PUR
16	UV Protection	Passed through UV Chamber	Surface doesnot effect when contact with UV rays



**PVC TILES**

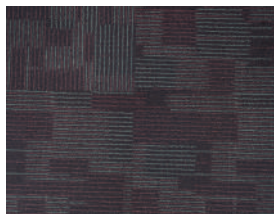
Timeless Like  
**Wood & Art**  
Luxury Vinyl Tiles (LVT)

**YAK**  
Luxury Vinyl Tiles (LVT)

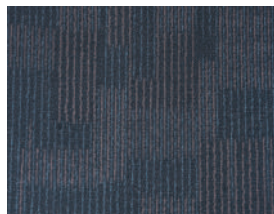




## Wood & Art



C-003



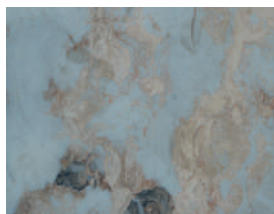
C-007



C-008



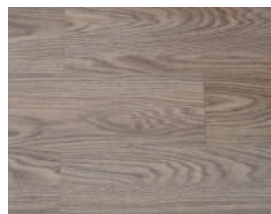
C-009



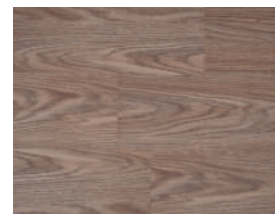
C-013



301



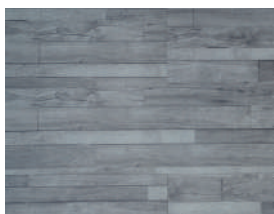
303



304



305



306



307



308



309



310



311

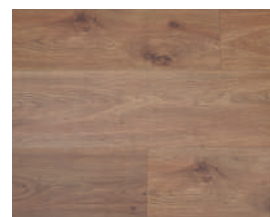
## YAK



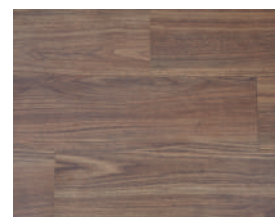
YAK-351



YAK-352



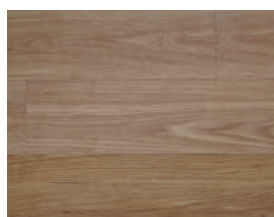
YAK-353



YAK-354



YAK-355



YAK-356



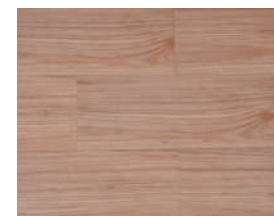
YAK-357



YAK-358



YAK-359



YAK-360





## Head Office Address

P.O. Box: 10905, 2nd Floor,  
Prasiddhi Tower, Pulchowk-3,  
Lalitpur, Nepal  
+977 1 5970970, 5550576  
info@yeticarpet.com  
info@yetipolychem.com

## Factory Address

Yeti Carpet  
Birgunj-32, Nepal

---

Yeti Polychem  
Hetauda Industrial District,  
Hetauda, Makwanpur, Nepal

Yeti Carpet Is Jointly Promoted By:

